

EDIROL
by Roland

USB MIDI INTERFACE
UM-2EX

Owner's Manual



Thank you, and congratulations on your choice of the UM-2EX USB MIDI Interface.



Before using this unit, carefully read the sections entitled: "USING THE UNIT SAFELY" and "IMPORTANT NOTES" (p. 2; p. 4). These sections provide important information concerning the proper operation of the unit. Additionally, in order to feel assured that you have gained a good grasp of every feature provided by your new unit, Owner's manual should be read in its entirety. The manual should be saved and kept on hand as a convenient reference.

Copyright © 2005 ROLAND CORPORATION
All rights reserved. No part of this publication may be reproduced in any form without the written permission of ROLAND CORPORATION.


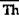

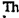

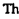
USING THE UNIT SAFELY

INSTRUCTIONS FOR THE PREVENTION OF FIRE, ELECTRIC SHOCK, OR INJURY TO PERSONS

About  WARNING and  CAUTION Notices




 WARNING	Used for instructions intended to alert the user to the risk of death or severe injury should the unit be used improperly.
 CAUTION	Used for instructions intended to alert the user to the risk of injury or material damage should the unit be used improperly. * Material damage refers to damage or other adverse effects caused with respect to the home and all its furnishings, as well to domestic animals or pets.

About the Symbols



	The  symbol alerts the user to important instructions or warnings. The specific meaning of the symbol is determined by the design contained within the triangle. In the case of the symbol at left, it is used for general cautions, warnings, or alerts to danger.
	The  symbol alerts the user to items that must never be carried out (are forbidden). The specific thing that must not be done is indicated by the design contained within the circle. In the case of the symbol at left, it means that the unit must never be disassembled.
	The  symbol alerts the user to things that must be carried out. The specific thing that must be done is indicated by the design contained within the circle. In the case of the symbol at left, it means that the power-cord plug must be unplugged from the outlet.

----- ALWAYS OBSERVE THE FOLLOWING -----


WARNING



- Before using this unit, make sure to read the instructions below, and the Owner's Manual. 
- Do not open (or modify in any way) the unit. 
- Do not attempt to repair the unit, or replace parts within it (except when this manual provides specific instructions directing you to do so). Refer all servicing to your retailer, the nearest Roland Service Center, or an authorized Roland distributor, as listed on the "Information" page. 


WARNING


- Never use or store the unit in places that are:
 - Subject to temperature extremes (e.g., direct sunlight in an enclosed vehicle, near a heating duct, on top of heat-generating equipment); or are
 - Damp (e.g., baths, washrooms, on wet floors); or are
 - Humid; or are
 - Exposed to rain; or are
 - Dusty; or are
 - Subject to high levels of vibration.
- 
-
- 


WARNING

- Make sure you always have the unit placed so it is level and sure to remain stable. Never place it on stands that could wobble, or on inclined surfaces. 


- Do not allow any objects (e.g., flammable material, coins, pins); or liquids of any kind (water, soft drinks, etc.) to penetrate the unit. 


- Immediately disconnect the USB cable, and request servicing by your retailer, the nearest Roland Service Center, or an authorized Roland distributor, as listed on the "Information" page when: 
 - If smoke or unusual odor occurs
 - Objects have fallen into, or liquid has been spilled onto the unit; or
 - The unit has been exposed to rain (or otherwise has become wet); or
 - The unit does not appear to operate normally or exhibits a marked change in performance.


- In households with small children, an adult should provide supervision until the child is capable of following all the rules essential for the safe operation of the unit. 


- Protect the unit from strong impact. (Do not drop it!) 


WARNING

- DO NOT play a CD-ROM disc on a conventional audio CD player. The resulting sound may be of a level that could cause permanent hearing loss. Damage to speakers or other system components may result. 

CAUTION

- Try to prevent cords and cables from becoming entangled. Also, all cords and cables should be placed so they are out of the reach of children. 

- Never climb on top of, nor place heavy objects on the unit. 

- Disconnect all cords coming from external devices before moving the unit. 

IMPORTANT NOTES

In addition to the items listed under “USING THE UNIT SAFELY” on pages 2 and 3, please read and observe the following:

Placement

- This device may interfere with radio and television reception. Do not use this device in the vicinity of such receivers.
- Noise may be produced if wireless communications devices, such as cell phones, are operated in the vicinity of this unit. Such noise could occur when receiving or initiating a call, or while conversing. Should you experience such problems, you should relocate such wireless devices so they are at a greater distance from this unit, or switch them off.
- Do not expose the unit to direct sunlight, place it near devices that radiate heat, leave it inside an enclosed vehicle, or otherwise subject it to temperature extremes. Excessive heat can deform or discolor the unit.
- When moved from one location to another where the temperature and/or humidity is very different, water droplets (condensation) may form inside the unit. Damage or malfunction may result if you attempt to use the unit in this condition. Therefore, before using the unit, you must allow it to stand for several hours, until the condensation has completely evaporated.

Maintenance

- For everyday cleaning wipe the unit with a soft, dry cloth or one that has been slightly dampened with water. To remove stubborn dirt, use a cloth impregnated with a mild, non-abrasive detergent. Afterwards, be sure to wipe the unit thoroughly with a soft, dry cloth.
- Never use benzene, thinners, alcohol or solvents of any kind, to avoid the possibility of discoloration and/or deformation.

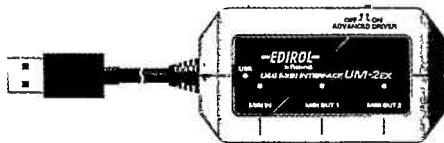
Additional Precautions

- Use a reasonable amount of care when using the unit's buttons, sliders, or other controls; and when using its jacks and connectors. Rough handling can lead to malfunctions.
- When connecting / disconnecting all cables, grasp the connector itself—never pull on the cable. This way you will avoid causing shorts, or damage to the cable's internal elements.
- To avoid disturbing your neighbors, try to keep the unit's volume at reasonable levels (especially when it is late at night).
- When you need to transport the unit, pack it in shock-absorbent material. Transporting the unit without doing so can cause it to become scratched or damaged, and could lead to malfunction.

Contents of the Package

The UM-2EX includes the following items. When you open the package, first make sure that all items are included. If any are missing, contact the dealer where you purchased the UM-2EX.

USB MIDI Interface UM-2EX



CD-ROM

This contains drivers for use with the UM-2EX.

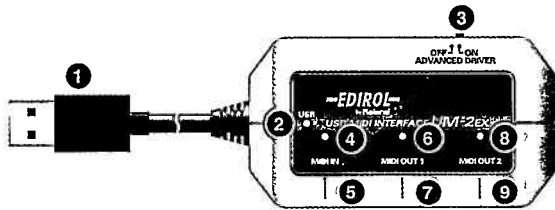
Owner's Manual

This is the manual you are reading. Please keep it on hand for reference.

Contents

Names of Things and What They Do.....	8
Getting Connected and Installing Drivers (Windows)	10
About the Driver Modes.....	10
Installing the Driver.....	11
Windows XP/2000 users.....	11
Windows Me/98 users	16
Setting the Driver.....	17
Windows XP users	17
Windows 2000/Me users	18
Windows 98 users	19
Getting Connected and Installing Drivers (Macintosh).....	20
About the Driver Modes.....	20
Driver Installation and Settings.....	20
Mac OS X users	21
Mac OS 9 users.....	25
Basic Use.....	32
Basic Connections and MIDI Flow.....	32
Transmitting MIDI messages from a MIDI keyboard or digital piano to the sequencer software	32
Transmitting MIDI Messages from the sequencer software to a MIDI sound module or digital piano.....	33
Appendices.....	34
About Standard Driver Mode.....	34
Installation of the standard driver	34
Standard driver settings	34
Troubleshooting.....	35
Main Specifications	43

Names of Things and What They Do



1 USB Cable

Use this when connecting the UM-2EX to your computer.

2 USB Indicator

This will light when you've connected the UM-2EX to your computer and your computer has detected the UM-2EX.

In order for your computer to detect the UM-2EX, you must install the driver and make settings. (→ "Getting Connected and Installing Drivers" Windows (p. 10) / Macintosh (p. 20))

3 ADVANCED (mode select) Switch

This switches the operating mode.

* *Standard driver mode supports only Windows XP SP2 or later, and Mac OS X.*

If you are using Windows 98 / Me / 2000 / XP or XP SP1, or if you are using Mac OS 9, you must turn the ADVANCED (mode select) Switch ON before you connect the UM-2EX to your computer.

ON (Advanced mode)	This mode utilizes the UM-2EX's special, advanced MIDI driver. This advanced driver uses *FPT technology for rapid, high-performance MIDI transmissions. We recommend use of this mode.
OFF (Standard driver mode)	This mode uses the standard MIDI driver included with the OS. Use this if you do not have the special driver installed.

*FPT=Fast Processing Technology of MIDI Transmission

4 MIDI IN Indicator

This lights when MIDI messages are received from the device connected to MIDI IN.

5 MIDI IN Connector

Connect this to the MIDI OUT connector of the device (such as a MIDI keyboard) that will be transmitting MIDI messages to your computer.

6 MIDI OUT 1 Indicator

This lights when MIDI messages from the computer are transmitted.

7 MIDI OUT 1 Connector

Connect this to the MIDI IN connector of the device (such as a sound module) that is to be employed by your computer for playing music.

8 MIDI OUT 2 Indicator

This lights when MIDI messages from the computer are transmitted.

9 MIDI OUT 2 Connector

Connect this to the MIDI IN connector of the device (such as a sound module) that is to be employed by your computer for playing music.

Getting Connected and Installing Drivers (Windows)

About the Driver Modes

What is a driver?

A "driver" is software that transfers data between the UM-2EX and application software running on your computer, when your computer and the UM-2EX are connected. The driver sends data from your application to the UM-2EX, and from the UM-2EX to your application.

About the driver modes

The UM-2EX has two operating modes, **Advanced mode** and **Standard driver mode**, and a different driver is used by each mode.

* *Standard driver mode supports only Windows XP SP2 or later.*

If you are using Windows 98 / Me / 2000 / XP or XP SP1, you must turn the ADVANCED (mode select) Switch ON before you connect the UM-2EX to your computer.

ON (Advanced mode)	This mode utilizes the UM-2EX's special, advanced MIDI driver. This advanced driver uses *FPT technology for rapid, high-performance MIDI transmissions. We recommend use of this mode. (→ "Installing the Driver" (p. 11))
OFF (Standard driver mode)	This mode uses the standard MIDI driver included with the OS. Use this if you do not have the special driver installed. (→ "Installation of the standard driver" (p. 34))

*FPT = Fast Processing Technology for MIDI Transmission

Installing the Driver

The installation procedure will differ depending on your system.
Please proceed to one of the following sections, depending on the system you use.

- Windows XP/2000 users.....p. 11
- Windows Me/98 users.....p. 16

Steps to be performed on the UM-2EX itself are marked by a **Operation of the UM-2EX** symbol.

Windows XP/2000 users

1. With the UM-2EX left unconnected, start up Windows.
Do not connect the UM-2EX to the computer until you reach Step 13 (p. 13).
 - * *Disconnect all USB cables except for a USB keyboard and USB mouse (if used).*
 - * *Log onto Windows using a user name that has administrative privileges (such as Administrator).*
2. Open the **System Properties** dialog box.
Windows XP:
 1. Click the Windows **start** menu, and from the menu, select **Control Panel**.
 2. In "Pick a category," click "Performance and Maintenance."
 3. In "or pick a Control Panel icon," click the **System** icon.
Depending on your setup, the **System** icon may appear directly in the **Control Panel (Classic view)**. If so, double-click the **System** icon.**Windows 2000:**
 1. Click the Windows **Start** menu, and from the menu that appears, select **Settings | Control Panel**.
 2. In **Control Panel**, double-click the **System** icon.
3. Click the **Hardware** tab, then click **[Driver Signing]**.
The **Driver Signing Options** dialog box will open.
4. In the **Driver Signing Options** dialog box, select "Ignore," then click **[OK]**.
If the current setting is "Warn" or "Block," change this to "Ignore." Then, when you've finished installing the driver, change it back to the original setting.

5. Click [OK] to close the **System Properties** dialog box.
6. Exit all currently running software (applications).
Also close any currently open windows. If you are using virus checking or similar software, you must exit all of these programs as well.
7. Prepare the CD-ROM.
Insert the CD-ROM into your computer's CD-ROM drive.
 - * If the message "**Windows can perform the same action each time you insert a disk or connect a device with this kind of file**" appears, [Cancel].
8. From the Windows start menu, choose **Run...**
9. In the **Open** field of the "**Run...**" dialog box, type the following and click [OK].
D: \DriverXP2K\setup.exe
 - * The drive name is "**D:**" in the example shown here, but may be different on your system. Use the drive name for your CD-ROM drive.
10. The **Driver Setup** dialog box will appear.
Click [Next].
11. To begin the installation, click [Next] once again. Installation will begin.

Windows XP:

If "**Driver Signing Options**" in step 4 is set to anything other than "**Ignore**," a dialog box with an "**I**" or "**x**" symbol will appear. If a [**Continue Anyway**] button is displayed, click [**Continue Anyway**] to proceed with the installation. If you are unable to continue, click [OK] and repeat the driver installation from step 1.

Windows 2000:

If "**Driver Signing Options**" in step 4 is set to anything other than "**Ignore**," a dialog box indicating "**Digital Signature Not Found**" will appear. If a [Yes] button is displayed, click [Yes] to proceed with the installation. If you are unable to continue, click [OK] and repeat the driver installation from step 1.

The "**Setup is now ready to install the drivers**" dialog box will appear.
Now you are ready to install the driver.

12. **Operation of the UM-2EX** Set the UM-2EX's **ADVANCED (mode select) Switch** to **ON**.

* *The driver cannot be installed by means of the following procedure if the switch is set to OFF.*

If you are using Windows 98 / Me / 2000 / XP or XP SP1, you must turn the **ADVANCED (mode select) Switch ON** before you connect the UM-2EX to your computer.

- 13.** **Operation of the UM-2EX** Connect the UM-2EX to your computer. A message of "Found New Hardware" will appear. Please wait.
- * *This unit is equipped with a protection circuit. A brief interval (a few seconds) after connecting the UM-2EX is required before the unit will operate normally.*

Windows XP:

1. The Found New Hardware Wizard dialog box will appear. If the message "Connect to Windows Update to search for software?" appears, choose "No" and then click [Next].
 2. Make sure that "EDIROL UM-2" is indicated. Then, choose "Install the software automatically (Recommended)" and click [Next].
- * *If "Driver Signing Options" in step 4 is set to anything other than "Ignore," a dialog box with an "I" symbol will appear. Click [Continue Anyway] to proceed with the installation.*

Windows 2000:

If "Driver Signing Options" in step 4 is set to anything other than "Ignore," a dialog box indicating "Digital Signature Not Found" will appear. Click [Yes] to proceed with the installation.

- 14.** The Completing the Found New Hardware Wizard dialog box will appear. Click [Finish].
- 15.** In the Driver Setup dialog box, click [Close]. This completes driver installation.

If the Change System Settings dialog box appears, click [Yes]. Windows will restart automatically.

- * *If you changed the "Driver Signing Options" setting (step 4 on p. 11), restore the original settings after Windows has restarted.*

Next, in order to ensure that MIDI processing occurs smoothly, you need to make settings so that Background Services is given priority.

(→ "Giving priority to Background Services" (p. 14))

■ Giving priority to Background Services

To ensure that MIDI data is handled smoothly, proceed as follows to make this setting.

Windows XP:

1. Open the System Properties dialog box.

1. From the Windows start menu, choose **Control Panel**.
2. In “Pick a category,” click “**Performance and Maintenance**.”
3. In “or Pick a Control Panel icon,” click the **System** icon.

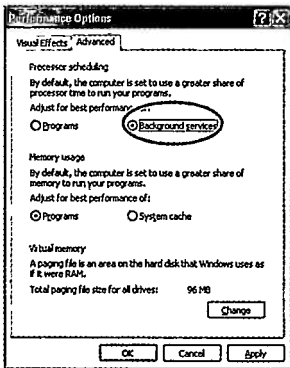
Depending on your setup, the **System** icon may appear directly in the **Control Panel** (Classic view). If so, double-click the **System** icon.

2. Click the Advanced tab.

3. In the right side of the Performance area, click [Settings].
The **Performance Options** dialog box will open.

4. Click the Advanced tab.

5. In the Processor scheduling area, choose “Background services,” and click [OK].

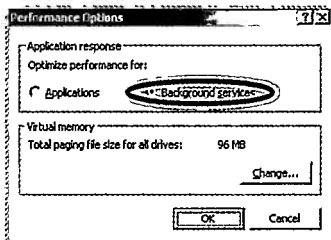


6. In the System Properties dialog box, click [OK].
The **System Properties** dialog box will close.

Next, you'll make the driver settings. (→ “Setting the Driver” (p. 17))

Windows 2000:

1. Click the Windows **Start** button, and from the menu that appears, select **Settings | Control Panel**.
2. In **Control Panel**, double-click the **System** icon.
3. Click the **Advanced** tab.
4. At the right of the **Performance** field, click [**Performance Options**].
The **Performance Options** dialog box will appear.
5. In the **Application response** field, choose "**Background services**" and click [**OK**].



6. Click [**OK**] to close the **System Properties** dialog box.
The **System Properties** dialog box will close.

Next, you'll make the driver settings. (→ "**Setting the Driver**" (p. 17))

Windows Me/98 users

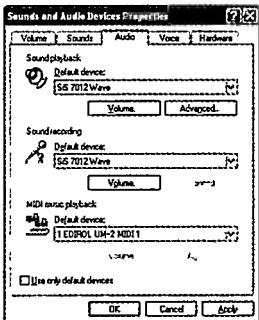
1. With the UM-2EX left unconnected, start up Windows.
Do not connect the UM-2EX to the computer until you reach Step 9.
2. Exit all currently running software.
Also close any open windows. If you are using virus checking or similar software, be sure to exit it as well.
3. Prepare the CD-ROM.
Insert the CD-ROM into the CD-ROM drive of your computer.
4. Click the Windows Start menu. From the menu that appears, select Run....
The "Run..." dialog box will appear.
5. In the dialog box that appears, input the following into the "Open" field, and click [OK].
D: \Driver\Me98\Setup.exe
 - * *The drive name is "D:" in the example shown here, but may be different on your system. Use the drive name for your CD-ROM drive.*
6. The Driver Setup dialog box will appear. Click [Next].
7. To begin the installation, click [Next] once again. Installation will begin.
The "Setup is now ready to install the drivers" dialog box will appear.
Now you are ready to install the driver.
8. **Operation of the UM-2EX** Set the UM-2EX's **ADVANCED (mode select) Switch** to the **ON** position.
 - * *The driver cannot be installed by means of the following procedure if the switch is set to OFF.*
 - If you are using Windows 98 / Me / 2000 / XP or XP SP1, you must turn the ADVANCED (mode select) Switch ON before you connect the UM-2EX to your computer.**
9. **Operation of the UM-2EX** Connect the UM-2EX to your computer.
A message of "Found New Hardware" will appear. Please wait.
 - * *This unit is equipped with a protection circuit. A brief interval (a few seconds) after connecting the UM-2EX is required before the unit will operate normally.*
10. In the Driver Setup dialog box, click [Close].
Next, you'll make the driver settings. (→ "Setting the Driver" (p. 17))

Setting the Driver

The following describes the settings needed to use the UM-2EX with Media Player or other sequencer software using Windows standard device settings. If you are using sequencer software that does not utilize Windows standard device settings, make the device settings within the sequencer software.

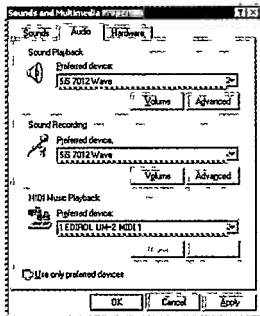
Windows XP users

1. Open the **Sounds and Audio Devices Properties** dialog box.
 1. From the Windows start menu, choose **Control Panel**.
 2. In "Pick a category," click **Sound, Speech, and Audio Devices**.
 3. In "or Pick a Control Panel icon," click the **Sounds and Audio Devices** icon.
Depending on your setup, the **Sounds and Audio Devices** icon may appear directly in the **Control Panel** (Classic view). If so, double-click the **Sounds and Audio Devices** icon.
2. Click the **Audio** tab.
3. For **MIDI music playback**, click the ▼ located at the right of [Default device], and select the MIDI device from the list that appears.
Selecting "EDIROL UM-2 MIDI 1" enables sounds to be played from the sound module connected to the UM-2EX's MIDI OUT 1 connector with Media Player or other sequencer software utilizing Windows standard device settings.
4. Close the **Sounds and Audio Devices Properties** dialog box.
Click **[OK]** to complete the settings.



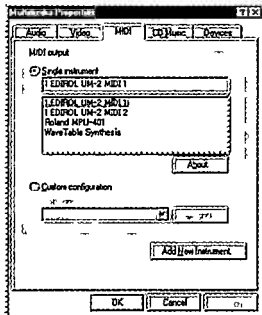
Windows 2000/Me users

1. Open the **Sounds and Multimedia Properties** dialog box.
 1. Click the **Windows start button**, and from the menu that appears, select **Settings | Control Panel**.
 2. In **Control Panel**, double-click the **Sounds and Multimedia** icon. If **Sounds and Multimedia** icon is not displayed, click “**Show all control panel options**” in the frame at the left.
2. Click the **Audio** tab.
3. Click ▼ in the **MIDI Music Playback [Preferred device]** menu and select the MIDI device from the list that appears. Selecting “**EDIROL UM-2 MIDI 1**” enables sounds to be played from the sound module connected to the UM-2EX’s MIDI OUT 1 connector with Media Player or other sequencer software utilizing Windows standard device settings.
4. Close the **Sounds and Multimedia Properties** dialog box. Click **[OK]** to complete the settings.



Windows 98 users

1. Open the **Multimedia Properties** dialog box.
 1. Click the **Windows Start** menu, and from the menu that appears, select **Settings | Control Panel**.
 2. In **Control Panel**, double-click the **Multimedia** icon.
2. Click the **MIDI** tab.
3. Select **[Single instrument]**, and select the MIDI device from the list that appears.
If you want to use **Media Player** to play a sound module connected to the **UM-2EX's MIDI OUT 1** connector, select **"EDIROL UM-2 MIDI 1."**
4. Close the **Multimedia Properties** dialog box.
Click **[OK]** to complete the settings.



Getting Connected and Installing Drivers (Macintosh)

About the Driver Modes

What is a driver?

A "driver" is software that transfers data between the UM-2EX and application software running on your computer, when your computer and the UM-2EX are connected. The driver sends data from your application to the UM-2EX, and from the UM-2EX to your application.

About the driver modes

The UM-2EX has two operating modes, **Advanced mode** and **Standard driver mode**, and a different driver is used by each mode.

- * *Standard driver mode supports only Mac OS X.*

If you're using OS 9, you must turn the ADVANCED (mode select) Switch ON before you connect the UM-2EX to your Macintosh.

ON (Advanced mode)	This mode utilizes the UM-2EX's special, advanced MIDI driver. This advanced driver uses *FPT technology for rapid, high-performance MIDI transmissions. We recommend use of this mode. (→ "Driver Installation and Settings" (p. 20))
OFF (Standard driver mode)	This mode uses the standard MIDI driver included with the OS. Use this if you do not have the special driver installed. (→ "Installation of the standard driver" (p. 34))

*FPT = Fast Processing Technology for MIDI Transmission

Driver Installation and Settings

The installation procedure will differ depending on your system.
Please proceed to one of the following sections, depending on the system you use.

- Mac OS X users..... (p. 21)
- Mac OS 9 users (p. 25)

Steps to be performed on the UM-2EX itself are marked by a **Operation of the UM-2EX** symbol.

Mac OS X users

■ Installing the driver

- * If the **"Authenticate"** dialog box appears during the installation, input the password and click **"OK."**
 - * What you actually see on your Macintosh screen may be different, depending on your computing environment and the operating system you're using.
1. With the UM-2EX left unconnected, start up Macintosh.
 - * Disconnect all USB cables other than those for your keyboard and mouse, and restart your Macintosh.
 2. Exit all currently running software (applications).
 3. Prepare the CD-ROM.
 - Insert the CD-ROM into the CD-ROM drive of your Macintosh.
 4. In the **Driver (Mac OS X)** folder of the CD-ROM, double-click **UM2USBDriver.pkg**.
 - A message such as **"This Installer package needs to..."** may appear.
 - Click **"Continue."**
 5. The display will indicate **"Welcome to the EDIROL UM-2Driver Installer."** Click **[Continue]**.
 6. The display will indicate **"Select a Destination."**
 - Click the drive in which the operating system is installed to select it, and then click **[Continue]**.
 - * Select your startup disk as the drive.
 7. The display will indicate **"Easy Install."**
 - Click **[Install]** or **[Upgrade]**.
 8. The display will indicate **"Installing this software requires you to restart your computer when the installation is done."**
 - Click **[Continue Installation]**.
 9. The display will indicate **"The software was successfully installed."**
 - Click **[Restart]** to restart your Macintosh.

This completes installation of the UM-2 driver.

Next, make MIDI device settings. (→**"Setting the driver"** (p. 22))

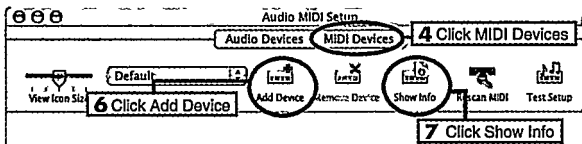
■ Setting the driver

The following describes the settings enabling use of the UM-2EX with sequencer software using Macintosh standard device settings.

If you are using sequencer software that does not utilize Macintosh standard device settings, make the device settings within the sequencer software.

* *What you actually see on your Macintosh screen may be different, depending on your computing environment and the operating system you're using.*

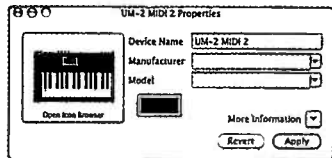
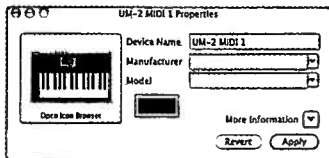
1. **Operation of the UM-2EX** Set the UM-2EX's **ADVANCED (mode select) Switch** to the **ON** position.
2. **Operation of the UM-2EX** Connect the UM-2EX to your Macintosh.
 - * *Connect the cable to the USB connector of the Macintosh itself, not to the USB connector of the keyboard.*
 - * *This unit is equipped with a protection circuit. A brief interval (a few seconds) after connecting the UM-2EX is required before the unit will operate normally.*
3. Open the **Applications** folder of your Macintosh hard disk. In the **Utilities** folder, double-click **Audio MIDI Setup** to open the **Audio MIDI Setup** dialog box.



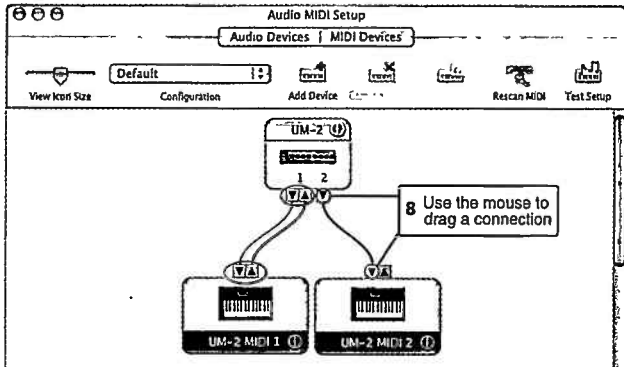
4. Click the **MIDI Devices** tab.
5. Confirm that **UM-2** appears in the **Audio MIDI Setup** dialog box.
 - * *If UM-2 does not appear or if it is grayed out, it means that the UM-2EX is not being recognized properly. Click **Rescan MIDI**. Also try disconnecting and reconnecting the UM-2EX.*
 - * *Previous settings from installation of a different version of the driver may still remain. If this is the case, click on the grayed **UM-2** or **EDIROL UM-2** to select it, then click **Remove Selected Device** to delete the settings.*
6. Click **Add Device** twice.
Two new external device will appear.

7. Set the Device Name.

1. With the new external device selected, click **Show Info**.
2. Enter the name in the **Device Name** field.



8. Connect the ▼ and ▲ symbols (which signify the outputs and inputs) of the UM-2 icon to those of the new external device icon by using the mouse to drag between them.




9. If running Mac OS X v10.2 or earlier:

Close the **Audio MIDI Setup** dialog box. The settings are completed.

If running **Mac OS X v10.3 or later:**

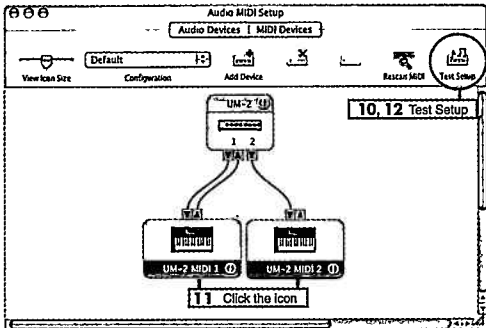
Confirm that MIDI is being transmitted and received correctly. Perform Steps 10–13 (p. 24).

10. Click Test Setup.

The shape of the mouse cursor changes .

11. Click the area shown in the illustration. If the corresponding MIDI OUT indicator of the UM-2EX blinks, the settings have been made correctly.

12. Click Test Setup and complete the confirmation.



13. Close the Audio MIDI Setup dialog box.

When using the UM-2EX with your sequencer software

Before using the UM-2EX with your sequencer software, please note the following points.

- Connect the UM-2EX to your Macintosh before you start up your sequencer software.
- Do not disconnect the UM-2EX from your Macintosh while your sequencer software is running. Quit your sequencer software before you disconnect the UM-2EX from your Macintosh.
- The UM-2EX will not operate in the Mac OS X Classic environment. Use the UM-2EX when the Classic environment is not running.

Mac OS 9 users

■ Installing the UM-2 driver

Use either **OMS** or **FreeMIDI** as the MIDI driver.

The included UM-2 driver is an add-on module for using the UM-2EX with OMS or FreeMIDI.

OMS can be found in the OMS 2.3.8 E folder within the OMS (Mac OS 9) folder of the CD-ROM. If you would like to know more about OMS, refer to OMS_2.3_Mac.pdf which can be found in the same folder.

- * Either **OMS** or **FreeMIDI** must be installed in your Macintosh, as appropriate for the sequencer software you are using.
- * If you install OMS after installing the UM-2 driver, you must install the UM-2 driver once again.

If a UM-2EX is already connected to your Macintosh when you install the driver, a message like the following will appear when the Macintosh is started up. Perform the steps described below as appropriate for the message that is displayed.

If the screen indicates:

“Software needed for the USB device “UM-2” is not available. Would you like to look for the software on the Internet?” → click [Cancel].

Use the following procedure to install the UM-2EX driver.

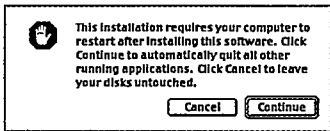
1. With the UM-2EX left unconnected, start up Macintosh
 - * Disconnect all USB cables other than those for your keyboard and mouse, and restart your Macintosh.
2. Exit all currently running software (applications).
3. Prepare the CD-ROM. Insert the CD-ROM into the CD-ROM drive of your Macintosh.
4. Double-click the **UM-2 Driver-E Installer** icon (found in the **Driver E (Mac OS 9)** folder of the CD-ROM) to start up the installer.

5. Verify the Install Location, and click [Install].

The installation location will be shown differently depending on your system. Make sure that you have selected the startup disk for the system you are currently using.

6. If a message like the following is displayed, click [Continue].

The other currently running software will exit, and installation will continue.



7. A dialog box will indicate Installation was successful.

Click [Restart] to restart your Macintosh.

Next, make the driver settings.

- OMS usersp. 27
- FreeMIDI usersp. 30

■ OMS settings

If you are using FreeMIDI, proceed to "FreeMIDI settings" (p. 30).

1. **Operation of the UM-2EX** Set the UM-2EX's **ADVANCED (mode select) Switch** to the **ON** position.
2. **Operation of the UM-2EX** Connect the UM-2EX to your Macintosh.
 - * *Connect the cable to the USB connector of the Macintosh itself, not to the USB connector of the keyboard.*
 - * *This unit is equipped with a protection circuit. A brief interval (a few seconds) after connecting the UM-2EX is required before the unit will operate normally.*
3. From the CD-ROM, drag the **Driver E (Mac OS 9) - OMS Setting** folder into the **Opcode - OMS Applications** folder on the hard disk of your Macintosh to copy it there.
4. In the **Opcode - OMS Applications** folder where you installed OMS, double-click **OMS Setup** to start it up.

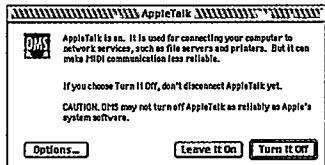


OMS Setting

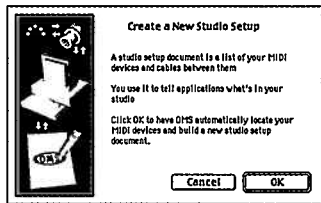


OMS Setup

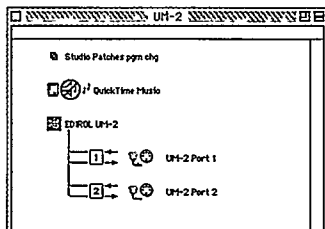
5. If a dialog box like the one shown here appears, click **[Turn It Off]**. A confirmation dialog box will then appear, so click **[OK]**.
 - * *We recommend that you turn off AppleTalk, by selecting Chooser from the Apple menu.*



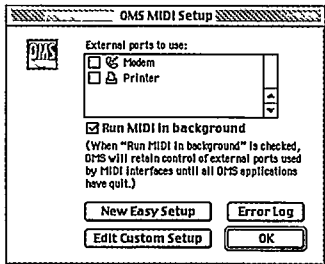
6. The Create a New Studio Setup dialog box will appear. Click [Cancel]. If you accidentally clicked [OK], click [Cancel] in the next screen.



7. Choose "Open" from the File menu. From the OMS Setting folder that you copied in step 3, select the UM-2 file, and click [Open]. A screen like the one shown here will appear.




8. From the Edit menu, select OMS MIDI Setup. In the OMS MIDI Setup dialog box that appears, check Run MIDI In background, and click [OK].



9. From the **File** menu, choose **Make Current**. If you are unable to select **Make Current**, it has already been applied, and you may continue to the next step.

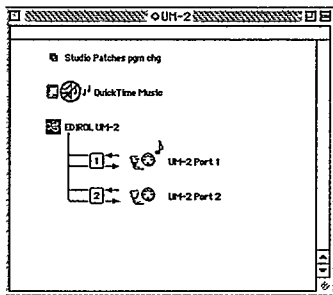
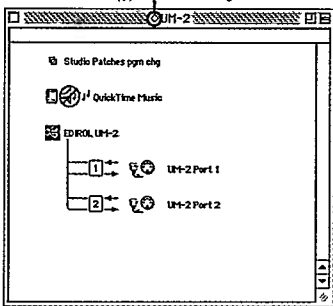
10. Verify that MIDI transmission and reception can be performed correctly.
From the **Studio** menu, choose **Test Studio**.

11. When you move the mouse cursor near the MIDI connector icon, the cursor will change to a  shape. Click the MIDI connector icon shown in the illustration. If the corresponding MIDI OUT indicator of the UM-2EX blinks, the settings have been made correctly.

12. Exit OMS Setup.

From the **File** menu, choose **[Exit]**. If the **AppleTalk** confirmation dialog box appears, click **[OK]** to close the dialog box.

A diamond mark (◊) indicates the settings are enabled.

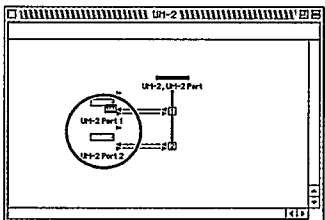


■ FreeMIDI settings

1. **Operation of the UM-2EX** Set the UM-2EX's **ADVANCED (mode select) Switch** to the **ON** position.
2. **Operation of the UM-2EX** Connect the UM-2EX to your Macintosh.
 - * *Connect the cable to the USB connector of the Macintosh itself, not to the USB connector of the keyboard.*
 - * *This unit is equipped with a protection circuit. A brief interval (a few seconds) after connecting the UM-2EX is required before the unit will operate normally.*
3. From the CD-ROM, drag the **Driver E (Mac OS 9) - FreeMIDI Setting** folder into the **FreeMIDI Applications** folder on the hard disk of your Macintosh to copy it there.
4. Open the **FreeMIDI Applications** folder from the location into which you installed **FreeMIDI**, and double-click the **FreeMIDI Setup** icon to start it up.
When "**OMS is installed on this computer...**" appears, click [**FreeMIDI**].
5. The first time you start up, use the following procedure.
 1. A dialog box saying "**Welcome to FreeMIDI!**" will appear.
Click [**Continue**].
 2. The **FreeMIDI Preferences** dialog box will appear.
Click [**Cancel**].
 3. The **About Quick Setup** dialog box will appear.
Click [**Cancel**].
6. From the **File** menu, choose **Open**.
If you are unable to select **Open**, return to step 4 and continue the procedure.
 1. From the **File** menu, choose **FreeMIDI Preference**.
 2. Uncheck "**Use OMS when available.**"
 3. Close **FreeMIDI**.
7. Select **UM-2** from the **FreeMIDI Setting** folder you copied in step 3, and click [**Open**].
8. Verify that MIDI transmission and reception occur correctly.
From the **MIDI** menu, choose **Check Connections**.

9. The mouse cursor will change to the shape of a keyboard.

Click the icon shown in the illustration. If the corresponding MIDI OUT indicator of the UM-2EX blinks, the settings have been made correctly.



10. Once again choose the MIDI menu command **Check Connections** to end the test.

11. From the **File** menu, choose **Quit** to exit **FreeMIDI Setup**.

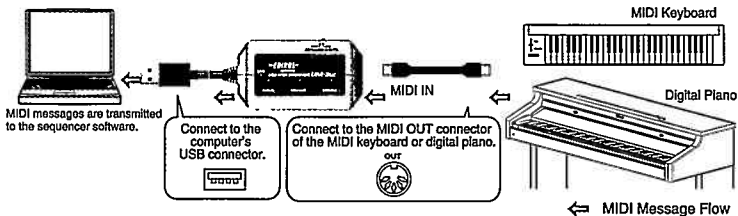
Basic Use

This chapter describes different basic methods of connecting the UM-2EX according to how the UM-2EX is to be used.

Basic Connections and MIDI Flow

Transmitting MIDI messages from a MIDI keyboard or digital piano to the sequencer software

To transmit MIDI messages from a MIDI keyboard or digital piano to the sequencer software or make a MIDI recording of a keyboard performance or other performance using sequencer software on your computer, make the following connections and settings.



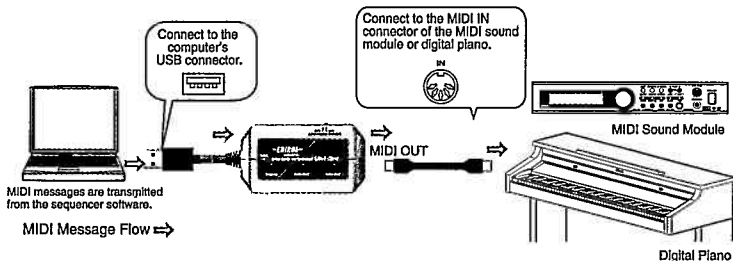
MIDI device setting

Specify UM-2 MIDI 1 for MIDI IN.

- * Make the device settings within the sequencer software.

Transmitting MIDI Messages from the sequencer software to a MIDI sound module or digital piano

If transmitting MIDI messages from the sequencer software to a MIDI sound module or digital piano, or if using a MIDI sound module's or digital piano's sound generator to play the sounds from the playback of sequencer software on the computer, make the following connections and settings.



MIDI device setting

If you connected your device to the MIDI OUT 1 connector, specify **UM-2 MIDI 1** for MIDI OUT.
If you connected your device to the MIDI OUT 2 connector, specify **UM-2 MIDI 2**.
For more on how to make the settings, refer to "Getting Connected and Installing Drivers"
(Windows: p. 10 / Macintosh: p. 20).

* If you are using sequencer software that does not utilize Windows or Macintosh standard device settings, make the device settings within the sequencer software.

Appendices

About Standard Driver Mode

Use this mode when using the standard MIDI driver provided with the operating system.

- * *Standard driver mode supports only Windows XP SP2 or later, and Mac OS X.*

If you are using Windows 98/Me/2000/XP or XP SP1, or if you are using Mac OS 9, you must turn the ADVANCED (mode select) Switch ON before you connect the UM-2EX to your computer.

Installation of the standard driver

1. With the UM-2EX left unconnected, start up your computer.
 - * *Disconnect all USB cables other than those for your keyboard and mouse, and restart your Macintosh.*
2. Exit all currently running software (applications).
3. Set the UM-2EX's ADVANCE DRIVER switch (mode switch) to OFF.
4. Connect the UM-2EX to the computer.

The driver is automatically installed.

 - * *This unit is equipped with a protection circuit. A brief interval (a few seconds) after connecting the UM-2EX is required before the unit will operate normally.*

Standard driver settings

These settings enable use of the UM-2EX with sequencer software that uses Windows or Macintosh standard device settings.

If using sequencer software that does not utilize Windows standard device settings, make the device settings within the sequencer software. For instructions on the device settings for your particular sequencer software, refer to the owner's manual that was supplied with it.

When using Windows XP

1. In accordance with Step 1 in "Windows XP users" (p. 17), open the Audio tab in the Sounds and Audio Devices Properties dialog box.
2. Click the ▼ for [Default device] in the MIDI music playback menu and select the USB audio device from the list that appears.

Depending on your computing environment, "(2)" or some other number may be added at the end of the port name.

When using Macintosh (Mac OS X)

The procedure is the same as for Advanced mode. Refer to "Setting the driver" (p. 22).

Troubleshooting

If you experience problems, read this chapter first. It contains tips for solving most problems.

- * *For details on operating your Windows or Macintosh computer, refer to the owner's manual of the computer and operating system you are using.*

Problems Related to the USB Driver

Cannot install the driver correctly

Install the UM-2 driver once again as described in **Getting Connected and Installing Drivers (Windows)** (p. 10) or **Getting Connected and Installing Drivers (Macintosh)** (p. 20).

Is the UM-2EX connected correctly?

Make sure that the USB connector of your computer is connected to the UM-2EX.

Could any other USB device be connected?

Before you install, disconnect all USB devices except for your mouse and keyboard.

Could other software or resident software (such as antivirus programs) be running?

Installation may not be successful if other programs are running.

Be sure to close all other programs before installation.

Is the CD-ROM correctly inserted into your CD-ROM drive?

Installation is not possible unless the CD-ROM included with the UM-2EX is inserted in your CD-ROM drive. Make sure that the CD-ROM is correctly inserted into your CD-ROM drive.

Are you attempting to install from a networked CD-ROM drive?

You cannot install from a networked CD-ROM drive.

Is the CD-ROM or the lens of the CD-ROM drive dirty?

If the CD-ROM or the lens of the CD-ROM drive is dirty, the installer may not work correctly.

Clean the disc and/or lens using a commercially-available CD cleaner or lens cleaner.

Is your computer's power-conservation mode turned off?

If power-conservation settings are enabled on your computer, please disable any such settings. For the procedure, refer to the owner's manual of your computer.

Is there sufficient free space on your hard disk?

Delete unneeded files to increase the amount of free space. After deleting the unneeded files, empty the recycling bin.

Could the UM-2EX's ADVANCED (mode select) Switch be OFF?

Turn the UM-2EX's ADVANCED (mode select) Switch ON, restart Windows, and re-install the driver.

Does your computer or USB hub have sufficient power supply capacity?

The UM-2EX cannot be connected if insufficient power is supplied to it. Check whether one of the following cases apply.

- If you are using the UM-2EX with a notebook computer that is running on its battery, operation may be unreliable with some models of computer. If this is the case, connect the AC adaptor to your notebook computer.
- The power conservation mode of your computer may limit the power that is supplied to USB. Check the settings of your computer.
- In some cases, the UM-2EX cannot be used with a bus-powered hub (a hub that does not contain a power supply). Please use a self-powered hub (a hub that contains a power supply).

Is USB enabled on your computer?

Refer to the operation manual for your computer, and make sure that USB is enabled.

Does your computer meet the USB specifications?

If you are using a computer that does not fulfill the electrical requirements of the USB specifications, operation may be unstable. In this case, you may be able to solve the problem by connecting a USB hub.

In the Device Manager, do you see "Other device," "Unknown device," or a device for which "?", "!" or "x" is displayed? (Windows)

If the driver installation could not be successfully completed, the installed driver may remain in an incomplete state.

Re-install the driver. (→"Installing the Driver" (p. 11))

Is OMS or FreeMIDI installed? (Mac OS 9)

The UM-2 driver cannot be installed unless OMS or FreeMIDI are installed. Please install OMS or FreeMIDI.

Windows XP/2000 displays a “Hardware Installation” or “Digital Signature Not Found” dialog box

Did you make “Driver Signing Options”?

In order to install/re-install the driver, you must make the settings described in “Driver Signing Options” (p. 11).

You are asked to install the driver file even though you installed the driver (Windows)

Did you connect the UM-2EX to a different USB connector than the one you used when installing the driver?

If your computer or USB hub has two or more USB connectors, and you connect the UM-2EX to a different USB connector, you may be asked for the driver file even though the driver has already been installed in your computer. (Such a response does not indicate a malfunction.) Proceed as follows to install the driver.

1. Connect the UM-2EX to the computer.

Windows XP:

1. The **Found New Hardware Wizard** dialog box will appear. If the message “**Connect to Windows Update to search for software?**” appears, choose “**No**” and then click [**Next**].
2. Choose “**Install the software automatically (Recommended)**” and click [**Next**]. If a dialog box with an “**I**” or “**x**” symbol will appear, click [**Continue Anyway**] to proceed with the installation. If you are unable to continue, click [**OK**] and repeat the driver installation. (→“Installing the Driver” (p. 11))

Windows 2000:

If a dialog box indicating “**Digital Signature Not Found**” will appear, click [**Yes**] to proceed with the installation. If you are unable to continue, click [**OK**] and repeat the driver installation. (→“Installing the Driver” (p. 11))

2. The **Completing the Found New Hardware Wizard** dialog box will appear. Click [**Finish**].
3. If the **Change System Settings** dialog box appears, click [**Yes**]. Windows will restart automatically.

If you are unable to complete driver installation using the above method, repeat the driver installation. (→“Installing the Driver” (p. 11))

“Find new hardware wizard” does not execute automatically
“Find new hardware wizard” ends before the process is completed
“Found unknown device” appears even though you installed the driver (Windows)

Is the USB cable connected correctly?

Make sure that the UM-2EX's USB cable and your computer are correctly connected. It may take about 15seconds (or more) after the USB cable is connected.

Does your computer or USB hub have sufficient power supply capacity?

The UM-2EX cannot be connected if insufficient power is supplied to it. Check whether one of the following cases apply.

- If you are using the UM-2EX with a notebook computer that is running on its battery, operation may be unreliable with some models of computer. If this is the case, connect the AC adaptor to your notebook computer.
- The power conservation mode of your computer may limit the power that is supplied to USB. Check the settings of your computer.
- In some cases, the UM-2EX cannot be used with a bus-powered hub (a hub that does not contain a power supply). Please use a self-powered hub (a hub that contains a power supply).

Is USB enabled on your computer?

Refer to the operation manual for your computer, and make sure that USB is enabled.

Does your computer meet the USB specifications?

If you are using a computer that does not fulfill the electrical requirements of the USB specifications, operation may be unstable. In this case, you may be able to solve the problem by connecting a USB hub.

UM-2EX is not detected when making OMS or FreeMIDI settings (Mac OS 9 users)

Is the UM-2EX detected?

- Reconnect the UM-2EX.
- If other USB devices are connected, connect only the UM-2EX.
- It is possible that the Macintosh did not correctly detect and initialize the UM-2EX. Leave the UM-2EX connected, and restart your Macintosh. If it is still not detected, shut down your Macintosh, and then restart it.
- In some cases, the UM-2EX will not be detected if you have connected it to the USB connector located on the keyboard of the Macintosh. Please connect it to a USB connector on the Macintosh itself.

Deleting the Driver

If you were unable to install the driver according to the procedure given, the UM-2EX may not be recognized correctly by the computer. In this case, use the following procedure to delete the driver, and then follow the procedure to install the driver once again.

Windows users

1. Start up Windows with the UM-2EX disconnected.
Disconnect all USB cables other than a USB keyboard or USB mouse.

* *If you are using Windows XP Professional/2000, log on as a user that has administrative privileges (e.g., Administrator).*

2. Insert the CD-ROM into the CD-ROM drive of your computer.
3. From the Windows **Start** menu, choose “**Run...**”
In the Run dialog box, input the following into the **Open** field, and click **[OK]**.

Windows XP/2000 users: D:\Driver\XP2k\Uninstal.exe

Windows Me/98 users: D:\Driver\Me98\Uninstal.exe

* *The drive name is “D:” in the example shown here, but may be different on your system. Use the drive name for your CD-ROM drive.*

4. Follow the on-screen instructions to uninstall the driver.

Macintosh (Mac OS X) users

1. Start up Macintosh with the UM-2EX disconnected.
Disconnect all USB cables other than a USB keyboard or USB mouse.
2. Prepare the CD-ROM.
Insert the CD-ROM into the CD-ROM drive of your Macintosh.
3. In the **Driver (Mac OS X)** folder of the CD-ROM, double-click **“UM2_UnInstaller.”**
4. The display will indicate **“This uninstalls EDIROL UM-2 driver from this Macintosh.”**; click **[Uninstall]**.
If any other message appears, proceed as directed by that message.
5. The display will indicate **“Are you sure to uninstall the driver?”**; click **[OK]**.
6. The **“Authenticate”** dialog box will appear; enter the password and click **[OK]**.
7. The display will indicate **“Uninstallation is completed.”**; click **[Restart]**. Your Macintosh will then restart.

Macintosh (Mac OS 9) users

1. Start up Macintosh with the UM-2EX disconnected.
Disconnect all USB cables other than a USB keyboard or USB mouse.
2. From the **system extensions folder** inside the **System folder**, drag **“USB UM-2 Driver”** into the trash to delete it.
3. Delete **UM-2** from the **OMS Folder** inside the **System folder**, or drag **UM-2 Driver** from the **FreeMIDI Folder** inside the **System folder** to the trash.
4. Restart the Macintosh.

Problems When Using the UM-2EX

Sound is interrupted during MIDI playback

In Windows, did you make the setting described in “Giving priority to background services”?

In order to ensure that MIDI processing occurs smoothly, make the setting described in Giving priority to Background Services. (→Windows XP (p. 14) / Windows 2000 (p. 15))

Did you plug in the USB cable, or unplug it while a software was running?

Exit all software that are using the UM-2EX, and re-connect the UM-2EX.

Is your computer in Suspend or Sleep mode?

If so, get your computer to resume normal operation, then exit all software that are using the UM-2EX. Next re-connect the UM-2EX.

Are you running multiple software?

If multiple software are running simultaneously, an error message may appear. If this occurs, click [OK] and exit the other software.

Even if an software window is closed, it is still running if it appears in the taskbar. Be sure to exit unneeded software displayed.

Playback or recording halts midway through, and then becomes impossible

Was a heavy processing load experienced while using the UM-2EX, such as accessing the CD-ROM drive or a network?

If an operation involving a heavy processing load is performed while the UM-2EX is in use, it may not operate correctly. If this occurs, stop playback/recording, and then try resuming playback/recording. If you are still unable to play back/record, exit all software that use the UM-2EX, disconnect the UM-2EX from the computer and then reconnect it.

Operating system becomes unstable

Operation becomes unstable when the computer is started up with the UM-2EX already connected

Please start up your computer with the UM-2EX disconnected, and then connect the UM-2EX. On a computer that uses a USB keyboard, starting up the computer with the UM-2EX already connected may cause operation to become unstable. In this case, start up the computer with the UM-2EX disconnected, and then connect the UM-2EX.

Main Specifications

■ UM-2EX: USB MIDI Interface

Controllers

ADVANCED switch

Connectors

MIDI IN Connector x 1 (16 MIDI Channels)

MIDI OUT Connector x 2 (32 MIDI Channels)

USB Cable

Power Supply

Supplied from the computer

Current Draw

70 mA

Dimensions

81 (W) x 47 (D) x 28 (H) mm

3-3/16 (W) x 1-7/8 (D) x 1-1/8 (H) inches

Weight

110 g / 4 oz

Accessories

Owner's Manual

CD-ROM

** In the interest of product improvement, the specifications, appearance, and/or contents of this unit are subject to change without prior notice.*

Information

YOU NEED REPAIR SERVICE, CALL YOUR LOCAL SERVICE CENTER OR CONTACT DIRECTLY WITH THE
EQUIPMENT DISTRIBUTOR IN YOUR COUNTRY AS SHOWN BELOW.

==EQUIPMENT== EUROPE

EQUIPMENT (Europe) Ltd.
Studio 3.4 114 Power Road
London W4 5PY U. K.
TEL: +44 (0)20 8747 5949
FAX: +44 (0)20 8747 5948
http://www.equipment.com/uk/europe

Deutschland
TEL: 0700 33 47 65 20
France
TEL: 0810 000 371
Italia
TEL: 02 93778329

Roland

(NORTH AMERICA)

CANADA

Roland Canada Music Ltd.
(Head Office)
5480 Parkwood Way Richmond
B. C., V6V 2M4 CANADA
TEL: (604) 270 6626

U. S. A.

Roland Corporation U.S.
5100 S. Eastern Avenue
Los Angeles, CA 90040-2938,
U. S. A.
TEL: (323) 890 3700

(AFRICA)

EGYPT

Al Fanyan Trading Office
9, EBN Hagar Al Askalany Street,
ARD El Golf, Heliopolis,
Cairo 11341, EGYPT
TEL: 20-2-417-1828

REUNION

Malson FO - YAM Marcel
25 Rue Jules Hermann,
Chaudron - BP79 97 491
Ste Clotilde Cedex,
REUNION ISLAND
TEL: (0262) 218-429

SOUTH AFRICA

Paul Bothner(PTY)Ltd.
Royal Cape Park, Unit 24
Londonderry Road, Ottery 7800
Cape Town, SOUTH AFRICA
TEL: (021) 799 4900

(ASIA)

CHINA

Roland Shanghai Electronics Co.,Ltd.
5F, No.1500 Pingliang Road
Shanghai 200090, CHINA
TEL: (021) 5580-0800

Roland Shanghai Electronics Co.,Ltd.
(BEIJING OFFICE)
10F, No.18 3 Section Anhuaxili
Chaoyang District Beijing
100011 CHINA
TEL: (010) 6426-5050

Roland Shanghai Electronics Co.,Ltd.
(GUANGZHOU OFFICE)
2/F, No.30 Si Yu Nan Er Jie
Yi Xiang, Wu Yang Xin Cheng,
Guangzhou 510600, CHINA
TEL: (020) 8736-0428

HONG KONG

Parsons Music Ltd.
8th Floor, Railway Plaza, 39
Chatham Road South, T.S.T.,
Kowloon, HONG KONG
TEL: 2333 1863

INDIA

Rivera Digitech (India) Pvt. Ltd.
409, Nirman Kendra
Mahalaxmi Flats Compound
Off. Dr. Edwin Moses Road,
Mumbai-400011, INDIA
TEL: (022) 2493 9051

INDONESIA

PT Citra Inti/Rama
Jl. Cideng Timur No. 15J-150
Jakarta Pusat
INDONESIA
TEL: (021) 6324170

KOREA

Cosmos Corporation
1461-9, Seocho-Dong,
Seocho Ku, Seoul, KOREA
TEL: (02) 3486-8855

MALAYSIA/ SINGAPORE

Roland Asia Pacific Sdn. Bhd.
45-1, Block C2, Jalan PJU 1/39,
Dataran Prima, 47301 Petaling
Jaya, Selangor, MALAYSIA
TEL: (03) 7805-3263

PHILIPPINES

G.A. Yunganco & Co. Inc.
339 Gil J, Puyat Avenue
Makati, Metro Manila 1200,
PHILIPPINES
TEL: (02) 899 9801

TAIWAN

**ROLAND TAIWAN
ENTERPRISE CO., LTD.**
Room 5, 9F, No. 112 Chung
Shan N.Road Sec.2, Taipei,
TAIWAN, R.O.C.
TEL: (02) 2561 3339

THAILAND

Theera Music Co., Ltd.
330 Verg NakomKasem, Sol
2, Bangkok 10100, THAILAND
TEL: (02) 2248821

VIETNAM

**SAIGON MUSIC
DISTRIBUTOR
(TAN DINH MUSIC)**
138 Tran Quang Khai Street
Dist. 1, Ho Chi Minh City
VIETNAM
TEL: (08) 848-4068

(AUSTRALIA/ NEW ZEALAND)

AUSTRALIA/ NEW ZEALAND

**Roland Corporation
Australia Pty., Ltd.**
38 Campbell Avenue
Dee Why West, NSW 2099
AUSTRALIA

For Australia
Tel: (02) 9982 8266
For New Zealand
Tel: (09) 3098 715

CENTRAL/LATIN AMERICA

ARGENTINA

Instrumentos Musicales S.A.
Av.Santa Fe 2035
(1123) Buenos Aires
ARGENTINA
TEL: (011) 4508-2700

BARBADOS

A&B Music Supplies LTD
12 Webster Industrial Park
Wilbey, St.Michael, Barbados
TEL: (246)430-1100

BRAZIL

Roland Brasil Ltda.
Rua San Jose, 780 Sala B
Parque Industrial San Jose
Cotia - Sao Paulo - SP, BRAZIL
TEL: (011) 4615 5666

CHILE

Comercial Fany II S.A.
Rut: 96.919.420-1
Natalien Cox #739, 4th Floor
Santlago - Centro, CHILE
TEL: (02) 688-9540

COLUMBIA

Centro Musical Ltda.
Cra 43 B No 25 A 41 Bodegosa 9
Medellin, Colombia
TEL: (574)3812529

CURACAO

Zealandia Music Center Inc.
Orionweg 30
Curacao, Netherland Antilles
TEL: (305)5972686

DOMINICAN REPUBLIC

Instrumentos Fernando
Giraldez
Calle Proyecto Central No.3
Ens-La Esperilla
Santo Domingo,
Dominican Republic
TEL: (809) 683 0305

ECUADOR

Mas Musica
Rumicacha - Ecuador y Zaruma
Guayaquil - B22
TEL: (593-4)2302364

GUATEMALA

Casa Instrumental
Calzada Roosevelt 34-01, Zona
Ciudad de Guatemala
Guatemala
TEL: (502) 599-2888

HONDURAS

Almacén Pajaro Azul S.A. de C
B.O.Paz Barahona
3 Ave.11 Calle 5.0
San Pedro Sula, Honduras
TEL: (504) 553-2029

MARTINIQUE

Musique & Son
Z.L.Les Mangle
97232 Le Laminin
Martinique F.W.I.
TEL: 596 596 426860

Gigamus SARL
10 Rue De La Folie
97200 Fort De France
Martinique F.W.I.
TEL: 596 596 715222

MEXICO

Casa Veerkamp, s.a. de c.v.
Av. Toluca No. 323, Col.
Olivar de los Padres 01780
Mexico D.F. MEXICO
TEL: (55) 5668-6699

NICARAGUA

**Bansbach Instrumentos
Musicales Nicaragua**
Almendra D'Este Calle Princi-
jal de la Farmacia 5ta.Avenida
1 Cuadra al Lago #503
Managua, Nicaragua
TEL: (505)277-2557

PERU

Adionet
Distribuciones Musicales SA
Juan Fanning 530
Miraflores
Lima - Peru
TEL: (511) 4461388

INIDAD

AR Ltd
ound Floor
ritime Plaza
rataria Trinidad W.I.
L: (868) 638 6385

RUGUAY

do Musica S.A.
ndisco Acuna de Figueroa 1771
: 11.800
nievidio, URUGUAY
L: (02) 924-2335

VENEZUELA

trumentos Musicales
legro, C.A.
las Industrias edf. Guitarr
port
zona Industrial de Turumo
racas, Venezuela
L: (212) 244-1122

EUROPE**AUSTRIA**

land Elektronische
sikinstrumente HmbH.
strian Office
uard-Bodem-Gasse 8,
5020 Innsbruck, AUSTRIA
L: (0512) 26 44 260

BELGIUM/FRANCE/**LUXEMBOURG**

land Central Europe N.V.
ulstraat 3, B-2260, Oevel
esterlo) BELGIUM
L: (014) 575811

CZECH REP.

AUDIO
ndasovska 626,
198 00 Praha 9,
Czech Rep.
L: (2) 666 10529

DENMARK

land Scandinavia A/S
rdhavsvej 7, Postbox 880,
2100 Copenhagen
NMARK
L: 3916 6200

FINLAND

Roland Scandinavia As, Filial
Finland
Elannontie 5
FIN-01510 Vantaa, FINLAND
TEL: (019) 68 24 020

GERMANY

Roland Elektronische
Musikinstrumente HmbH.
Oststrasse 96, 22844
Norderstedt, GERMANY
TEL: (040) 52 60090

GREECE

STOLLAS S.A.
Music Sound Light
155, New National Road
Patras 26442, GREECE
TEL: 2610 439400

HUNGARY

Roland East Europe Ltd.
Warehouse Area "DEPO" Pf 83
H-2046 Torokbalint,
HUNGARY
TEL: (23) 511011

IRELAND

Roland Ireland
G2 Calmount Park, Calmount
Avenue, Dublin 12
Republic of IRELAND
TEL: (01) 4294444

ITALY

Roland Italy S. p. a.
Viale delle Industrie 8,
20020 Arese, Milano, ITALY
TEL: (02) 937-78300

NORWAY

Roland Scandinavia Avd.
Kontor Norge
Lilleakervelen 2 Postboks 95
Lilleaker N-0216 Oslo
NORWAY
TEL: 2273 0074

POLAND

MX MUSIC SP.ZO.O.
UL. Gibraltarska 4.
PL-03664 Warszawa POLAND
TEL: (022) 679 44 19

PORTUGAL

Roland Iberia, S.L.
Portugal Office
Cais das Pedras, 8/9-1 Dto
4050-465, Porto, PORTUGAL
TEL: 22 608 00 60

ROMANIA

FBS LINES
Piata Libertatii 1,
535500 Gheorgheni,
ROMANIA
TEL: (266) 364 609

RUSSIA

MuTek
Dorozhnaya ul.3.korp.6
117 545 Moscow, RUSSIA
TEL: (095) 981-4967

SPAIN

Roland Iberia, S.L.
Paseo Garcia Faria, 33-35
08005 Barcelona SPAIN
TEL: 93 493 91 00

SWEDEN

Roland Scandinavia A/S
SWEDISH SALES OFFICE
Danvik Center 28, 2 tr.
S-131 30 Nacka SWEDEN
TEL: (08) 702 00 20

SWITZERLAND

Roland (Switzerland) AG
Landstrasse 5, Postfach,
CH-4452 Itingen,
SWITZERLAND
TEL: (061) 927-8383

UKRAINE

TIC-TAC
Mira Str. 19/108
P.O. Box 180
295400 Munkachevo,
UKRAINE
TEL: (03131) 414-40

UNITED KINGDOM

Roland (U.K.) Ltd.
Atlantic Close, Swansea
Enterprise Park, SWANSEA
SA7 9FJ,
UNITED KINGDOM
TEL: (01792) 702701

MIDDLE EAST**BAHRAIN**

Moon Stores
No.16, Bab Al Bahrain Avenue,
P.O.Box 247, Manama 304,
State of BAHRAIN
TEL: 17 211 005

CYPRUS

Radox Sound Equipment Ltd.
17, Diagonou Street, Nicosia,
CYPRUS
TEL: (022) 66-9426

IRAN

MOCO INC.
No.41 Nike St., Dr.Shariyati Ave.,
Roberoye Cerahe Mirdamad
Tehran, IRAN
TEL: (021) 285-4169

ISRAEL

Hallilit P. Greenspoon & Sons
Ltd.
8 Retzif Ha'aliya Hashnya St.
Tel-Aviv-Yafo ISRAEL
TEL: (03) 6823666

JORDAN

MUSIC HOUSE CO. LTD.
FREDDY FOR MUSIC
P. O. Box 922846
Amman 11192 JORDAN
TEL: (06) 5692696

KUWAIT

EASA HUSAIN AL-YOUSIFI
& SONS CO.
Abdullah Salem Street,
Safat, KUWAIT
TEL: 243-6399

LEBANON

Chahine S.A.L.
Gerge Zeidan St., Chahine
Bldg., Achrafieh, P.O. Box 16-
5857
Beirut, LEBANON
TEL: (01) 20-1441

OMAN

TALENTZ CENTRE L.L.C.
Malatan House No.1
Al Noor Street, Ruwi
SULTANATE OF OMAN
TEL: 2478 3443

QATAR

Badie Studio & Stores
P.O. Box 62,
Doha, QATAR
TEL: 423554

SAUDI ARABIA

aWdlah Universal
Electronics AFL
Comiche Road, Aldossary
Bldg., 1st Floor, Alkhobar,
SAUDI ARABIA

P.O.Box 2154, Alkhobar 31952
SAUDI ARABIA
TEL: (03) 898 2081

SYRIA

Technical Light & Sound
Center
Rawda, Abdul Qader Jazairi St.
Bldg. No. 21, P.O. BOX 13520,
Damascus, SYRIA
TEL: (011) 223-5384

TURKEY

ZUHAL DIS TICARET A.S.
Galiç Dede Cad. No.37
Beyoglu - Istanbul / TURKEY
TEL: (0212) 249 85 10

U.A.E.

Zak Electronics & Musical
Instruments Co. L.L.C.
Zabeel Road, Al Sherooq Bldg.,
No. 14, Grand Floor, Dubai,
U.A.E.
TEL: (04) 3360715

As of December 1, 2005
(EDIROL-1)