

0.711
(MAX INTONATION)

0.687 (±.062)
(STRING SPACING)

0.100
(ELONGATION)

0.622

0.286
(MIN INTONATION)

0.525
(MIN STRING HEIGHT)

0.750
(MAX STRING HEIGHT)

2.138

1.518

2.138

1.518

1.631

1.619

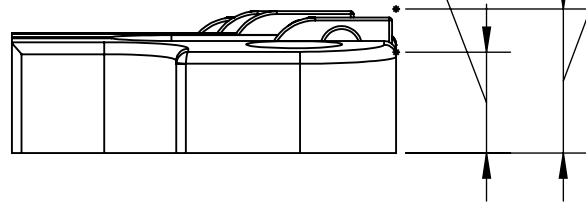
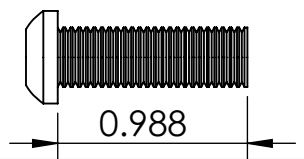
0.063
(ELONGATION)

0.531

1.145

2.000

5/16"-24 MOUNT SCREWS INCLUDED. ADJUST WITH 3/16" HEX KEY.



THIS DRAWING IS THE SOLE PROPERTY OF HIPSHOT PRODUCTS, INC. ALL RIGHTS ARE RESERVED. DIMENSIONS AND PRODUCT FEATURES ARE SUBJECT TO CHANGE WITHOUT NOTICE.

UNLESS OTHERWISE SPECIFIED: DIMENSIONS ARE IN INCHES TOLERANCE: ± .005

IMAGE NOT DRAWN TO SCALE



8248 STATE ROUTE 96
Interlaken, NY 14847 U.S.A.
TEL: 607-532-9404 FAX: 607-532-9530
E-MAIL: info@HipshotProducts.com

2 POINT SUPERTONE BASS BRIDGE

WEIGHT (WITH MOUNTING HARDWARE): 8.90oz

A
B
C
D

A
B
C

1 2 3 4 5 6

1 2 3